

The Magni Experience

Since 1974, customers in all industries have trusted Magni to engineer, manufacture and apply high-performance corrosion protection coatings that extend the service life of their products.

Headquartered in Birmingham, Michigan, we serve our clientele from research and development, manufacturing and technical service facilities worldwide. Our coatings are applied by a network of more than 140 licensed applicators that deliver an uncompromising standard of quality and consistency regardless of where or when they're applied.

World-class chemistry, worldwide consistency

Our high-performance coatings offer consistent appearance, shelf life and quality, regardless of where or when they're produced and applied.

Technical and customer service that paces the industry

Only Magni provides the support of relentless problem solvers who know your industry and remain at your side throughout your product's life cycle.

Corrosion protection is all we do

We're a corrosion protection partner that dedicates all of our talent and resources to helping you prolong the life cycle of your products.

Efficiency through proficiency

The guidance of our renowned technical experts will help you anticipate evolving market and regulatory demands, and help you prevent costly errors during R&D, application and beyond.

Corporate offices

Our corporate offices are strategically located around the globe to ensure that wherever and whenever you need our team, we can be there without delay. Contact your local office to discover how we can support you from product development to application and beyond.

The Magni Group
World Headquarters
Birmingham, MI, USA
+1 248-647-4500

Magni Europe
Schorndorf, Germany
+49 7181 977760

Magni Mexicana
Mexico City, Mexico
+55 2242 1741

Magni América do Sul
Campinas, SP, Brazil
+55 19 3783 9548

Magni India, Pvt. Ltd.
Haryana, India
+91 124 436 7309

Magni South Korea
Kyungki-do, Korea
+82 31 310 1910

Magni China
Jiangsu Province, China
+86 138 6131 9736

Magni Japan
Yokohama, Japan
+81 (0) 45 264 4488

Performance, covered.

Chassis - Suspension - Underbody

A two-layer engineered coating system for use on vehicle weldments and other underbody components. Magni 265 combines an inorganic zinc-rich primer with a high-performance organic topcoat. The zinc-rich primer is a suitable e-primer for additional e-coat protection.

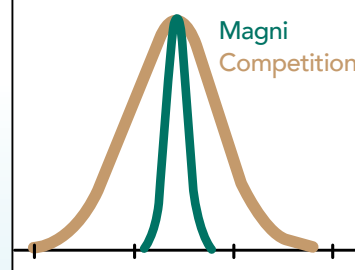
- Exceeds 15-year corrosion requirements
- Lightweighting goals achieved using thinner gauge steels
- Application provides complete interior coverage
- Eliminates the cost, quality and safety concerns of welding galvanized steel
- Provides superior corrosion protection in weld-heat-affected zones
- Joint integrity; Magni thin-film technology provides consistent friction
- Eliminates the need for costly anti-chip coatings

Fasteners - Stampings - Hardware

The Magni 500 series of coatings is designed for use on fasteners, stampings and other types of hardware. These coatings provide exceptional corrosion protection in the most extreme environments.

- Alleviates hydrogen embrittlement concerns
- Integrated lubricants provide consistent torque-tension relationship
- Superior performance achieved with fewer layers
- Fewer layers result in less handling damage and lower cost
- Specifically designed for joints containing aluminum (i.e., friction, bimetallic corrosion)
- Variety of colors available
- Coatings capable of withstanding temperatures up to 650°C
- 1500+ hours of salt spray

Distribution of friction coefficient data over multiple bearing surfaces:

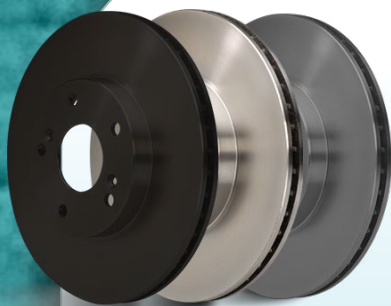


- 1 Plain steel or zinc phosphate
- 2 Zinc-rich basecoat (sacrificial layer)
- 3 Aluminum-rich topcoat (barrier layer)

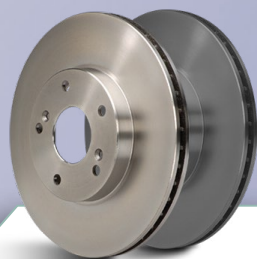
Brakes - Rotors - Calipers

As the global leader of engineered brake system coatings, we will work with you to optimize cost, quality and performance. Magni 100 series of coatings provide extended corrosion protection, enabling you to achieve both functional and visual performance goals.

- Economical air-dry and low-cure solutions
- Waterborne sacrificial and barrier systems
- Available in black, bright silver or gray
- Compatible with the braking surface
- Heat resistant up to 450°C



Products that perform



100 series

Brake system coatings

- **Magni 105:** silver water-based zinc-rich rotor coating
- **Magni 107:** black water-based zinc-rich rotor coating
- **Magni 111:** black water-based barrier rotor coating
- **Magni 140:** silver high-performance air-dry zinc-rich rotor coating



200 series

Muffler, underbody and chassis coatings

- **Magni 236:** black high-temperature-resistant exhaust coating
- **Magni 240:** suspension springs and driveline zinc-rich coating
- **Magni 265:** silver or black, chassis/suspension structure coating
- **Magni 295:** Magni ePrimer with eCoat, chassis/suspension structure coating



500 series

Fastener, clamp and stamping coatings

- **Magni 501:** single layer zinc-flake coating replacement for electroplated zinc
- **Magni 525:** UV stable multilayer zinc flake coating system available in various colors
- **Magni 554/556:** multilayer, silver high-performance fastener coating system
- **Magni 565:** silver or black, high-performance duplex fastener coating system
- **Magni 568:** silver or black, high-performance multilayer fastener coating systems
- **Magni 575:** black multilayer fastener finish utilizing a black basecoat for improved appearance
- **Magni 569/599:** water-based custom-colored construction coatings



300 series

Fuel tank coatings

- **Magni 336:** coil coated silver multi-layer coating system developed for fuel and corrosion resistance



600 series

Fuel filler pipe coatings

- **Magni 659:** black, multilayer coating system developed for fuel and corrosion resistance

Our insightful problem solvers and attentive, engaged technical service professionals work with leading global manufacturers in a variety of industries to help them stay ahead of market, legislative and regulatory demands.

Alfa Romeo	Jaguar
AM General	Land Rover
Amonix	JLG Industries
BAE	John Deere
BMW	Manitowoc
Bobcat	Meritor
Briggs and Stratton	Mitsubishi
Brose	MTD
Case New Holland	Navistar
Caterpillar	Nissan
Cummins Engine	Oshkosh Corp.
Daimler-Benz	Porsche
Delphi	PSA
Denso	Renault
Dometic	Subaru
Fiat Chrysler Automotive	Tesla Motors
Fisher Valve	Textron
Ford Motor Co.	Marine & Land
General Electric	Toyota
General Motors	Trane
Hendrickson	TRW
Honda	UL
Hyundai	U.S. ARMY
	TACOM
	Volkswagen
	Volvo
	Webb
	Wheel

Industries served worldwide



Agricultural



Automotive



Energy



Construction



Industrial



Marine



Military